

Guide to SKF Shelf

A single mobile source for relevant knowledge.

The SKF Shelf app allows you to:

Achieve confidence

- Be independent and access the downloaded documents offline, everywhere
- Be sure that the content is relevant and reliable
- Get notified when updates and additions become available

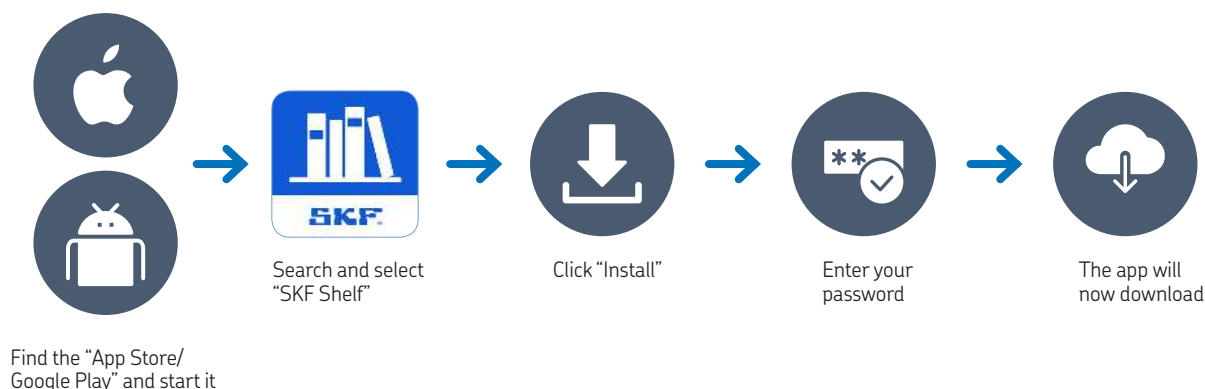
Work on your own terms

- Be flexible: customize and organize the library in a way that makes sense to you
- Combine downloaded information with own personal files
- Share selected content from and to Shelf, directly with others

Save time

- Get easy and instant access without registration
- Use search, bookmarks and annotations

Download for free

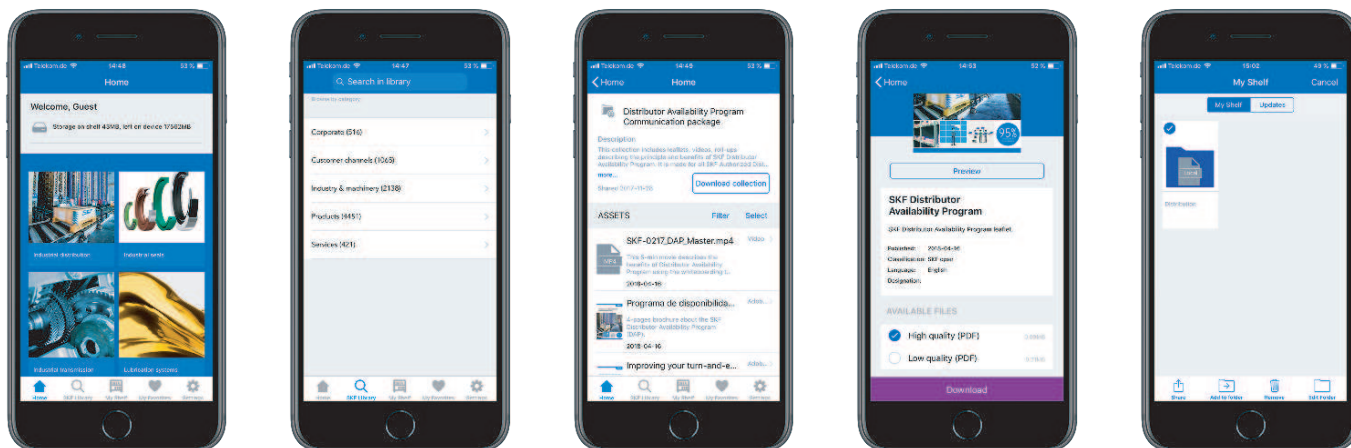


Get started

Similar to Apple iBooks, the SKF Shelf app delivers the latest and greatest content from SKF to your mobile device.



How to use the SKF Shelf App



Search and download

You can search for information in a variety of ways.

1. Use the content bundles, popular themes displayed on the home page.
2. Click the “SKF Library” icon and enter a search term or use the menu to drill down in different predefined categories.
3. Filter your search further by using the button in the top right corner. (Save a search to your “Favorites” to receive automatic notification when new / updated content becomes available).
4. Use the “Select” button to select and download collections or documents to “My Shelf” for offline access and automatic updates. (High or low quality PDF downloads.)

Get organized

1. Log in online and your “My Shelf” content is automatically updated to latest versions.
2. Create your own folders to organize your downloaded files. (Select a document on “My Shelf” and click the “Move” icon at bottom of page, then move to an existing folder or create a new one).

Share

Select documents on “My Shelf” and click the “Share” icon

1. By email
2. Via OneDrive
3. Via Box
4. Via DropBox

Add personal files

1. Go to the source application of your choice, e.g. One Drive
2. Navigate to the file you wish to transfer.
3. Click the “share” icon on the top right of the page and select “send file” option.
4. Select “copy to shelf”.

Simplify your day

Now just get started. For more information and detailed instructions, please follow: www.skf.com/skfshelf

skf.com

© SKF is a registered trademark of the SKF Group.
App Store is a trademark of Apple Inc.
Google Play is a trademark of Google LLC.
Dropbox is a trademark of Dropbox, Inc.
Box is a registered trademark of Box, Inc.
OneDrive is a registered trademark of Microsoft Corporation

© SKF Group 2018

The contents of this publication are the copyright of the publisher and may not be reproduced (even extracts) unless prior written permission is granted. Every care has been taken to ensure the accuracy of the information contained in this publication but no liability can be accepted for any loss or damage whether direct, indirect or consequential arising out of the use of the information contained herein.

PUB GC/S7 17961 EN · June 2018